



The Collier County Fair A “Salute to Heroes” In 2014

FAMILY LIVING AND HORTICULTURE PREMIUM INFORMATIONAL NEWSLETTER *COLLIER COUNTY FAIR* *MARCH 13 -23 2014*

Inside this issue:

Volume 6, Issue 1

Rules, Regulations, Departments and Classes

Sewing & Stitchery	3
Food Preservation	3
Amateur Culinary	4
Arts and Crafts	4,5
Photography	5
Fair Theme	5
Horticulture	6

Thank you for participating in Family Living. It is a crucial part of our community, culture and our Fair! We greatly appreciate **QUALITY EXHIBITS** as it is so apparent when people devote time to create beautiful exhibits. We hope you enjoy the 2013 Collier County Fair. There is no entry fee for entering an item, but entrants are restricted to part-time and full-time residents of Collier County.

ANY ENTRIES THAT HAVE BEEN ENTERED IN THE PAST CANNOT BE RE-ENTERED. Open Youth Exhibitors- 7yrs-under of age will only be allowed three (3) entries in Family Living and five (5) entries in Horticulture. **All Youth Exhibitors 7rs-under receive a maximum \$5.00 premium award, regardless of entry quantity.**

Every precaution will be taken to protect exhibits: however, the Collier County Fair, its officers or agents, will not be responsible for any accident, loss or damage for any items. Bring completed items to the Fairgrounds on the scheduled entry date(s). All items must be picked up from the Fairgrounds on **Monday, March 24, 2014 from 9:00am-12:00pm and 3:00p.m. to 6:00p.m ONLY.** If entries are not picked up by **March 24th**, ALL PREMIUMS WILL BE FORFEITED. No exhibit will be released before that time. The Collier County Fair Board will not be responsible for items not picked up by the designated time. **The Take-In Committee has the right to refuse any items found not to be suitable for judging.** All Judges' decisions are final. Entries that represent the Fair is going to be Huge should be entered under the 2014 Fair Theme Category. Participant(s) must include explanation as to how entry fits this category.



FAMILY LIVING

All articles to be entered must have been completed between **March 1, 2013 through March 1, 2014** and must be the handiwork of the entrants. Articles stained, soiled or excessively worn will be rejected. **All pictures and photographs must be in a frame and ready to hang with the manufacturer's hanging device attached to the frame (homemade devices will not be accepted). Items not meeting this criteria will be rejected.**

FOOD PRESERVATION



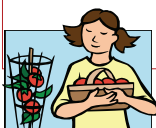
Food preservation items must be done in duplicate-one for tasting and one for display. All entries must include the recipe and processing method on a card attached to the product. All jars must be clear glass (standard) canning jars, 1/2 pint, pint or quart. Jar must be clean. Rings and lids should be free of rust. **NO OTHER JARS WILL BE ACCEPTED.** All entries must be processed by the water bath or pressure canning method. Products that do not meet the processing requirements will automatically be disqualified. Paraffin is not accepted.

CULINARY

Culinary entries must have attached recipe card and be carefully displayed under clear plastic disposable containers. Culinary entries are to be turned in **Saturday, February 22, 2014 at 9:00am** to the Fair Office. The Collier County Fair is not responsible for pans, platters, plates or etc. Recipe cards will not be returned and may be published or shared with anyone.

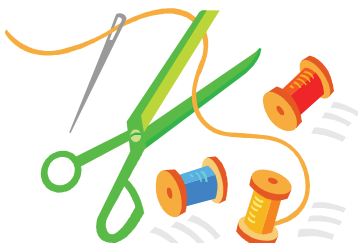
HORTICULTURE

All plants, including fruit and vegetable products must be of exhibition quality. Management reserves the right to reject any plant that is substandard, either in quality or maturity. Plants must be cleaned, trimmed, free from insects and/or disease and exhibited in proper containers. Absolutely no cans, except those made especially for plant containers will be accepted. Only one type plant is permitted per container (except as designated under class). Plants should be labeled with common name and correct botanical name where possible. Water plants well before bringing to the Fairgrounds. Plants will be watered regularly during Fair time. Special watering instructions for individual plants should be given as plants are entered. All entries must include a 3x5 card with entrant's name, plant's name, when plant was obtained and how plant was grown. Plants and products must have been grown only by the entrant and owned by the entrant before **JANUARY 1, 2014**. Entries will be brought to the Livestock Pavilion.



Department 1-Sewing and Stitchery

Class 1	Women's Apparel	Dresses, coats, lingerie, suits, beachwear, etc.
Class 2	Men's Wear	Pants, jackets, beachwear, suits, shirts, etc.
Class 3	Children's Wear	Baby garments, children's clothing, etc.
Class 4	Home Accessories	Placemats, pillows, bed accessories, etc.
Class 5	Embroidery	Placemats, pillows, picture, tablecloth, etc.
Class 6	Counted Cross Stitch	Samples, wall hanging, picture, pillow, etc.
Class 7	Needlepoint	Canvas, chair covers, purse, wall hanging, hooking, pillow, rug, etc.
Class 8	Latch or Locker Hooking	Rug, needle punch, wall hanging, etc.
Class 9	Crochet	Tablecloths, afghan, baby set, cape, etc.
Class 10	Knitting	Dress, afghan, sweater, children's wear, etc.
Class 11	Machine Quilting	Lap size or larger, etc.
Class 12	Hand Quilting	Lap size or larger, etc.
Class 13	Quilting	Crib, wall hanging, mini-quilt, pillows, etc.
Class 14	Quilted Wearable	Vest, jacket, clothing articles, etc.
Class 15	Professional/Creative	Any article or apparel designed and made by exhibitor. Sewing & Stitchery PROFESSIONAL- A person who received or has received monies for teaching and or selling their work.



Be sure and check out the new classes in some of our departments. If you would like to see a new class in 2015, please contact the Fair Office.



Special points of interest:

- ALL ENTRY FORMS FOR FAMILY LIVING DEPARTMENTS WILL BE PROVIDED AT THE FAMILY LIVING TENT.
- ALL ENTRY FORMS FOR HORTICULTURE WILL BE PROVIDED AT THE LIVESTOCK PAVILION.
- ALL ENTRIES (except Amateur Culinary see below) WILL BE RECEIVED ON FRIDAY, MARCH 7, 2014 FROM 6:00PM-8:00PM AND SATURDAY, MARCH 8, 2014 FROM 9:00AM-12:00PM.
- AMATEUR CULINARY ENTRIES WILL BE RECEIVED ON FEBRUARY 22, 2014 AT 9:00AM ONLY, IN THE FAIR OFFICE.
- IT IS SUGGESTED BY THE FAMILY LIVING COMMITTEE THAT EACH ENTRANT HAVE A LIST OF ENTRIES PREPARED TO SPEED UP THE ENTRY PROCESS. THIS IS ESPECIALLY HELPFUL FOR ENTRANTS HAVING MULTIPLE ENTRIES. THE LIST SHOULD INCLUDE THE NAME OF EACH ITEM, WITH CORRECT DEPARTMENT AND CLASS NUMBERS.

WE'RE ON THE WEB

WWW.COLLIERCOUNTYFAIR.COM

TWITTER AND FACEBOOK

Department 2-Food Preservation

Class 16	Vegetables
Class 17	Fruits
Class 18	Preserves, Jams, Marmalades
Class 19	Jellies
Class 20	Butters, Salsa
Class 21	Pickles, Relishes



Remember to include your recipe and instruction 3x5 index card with both Jars!



Department 3-Amateur Culinary

Class 22	Breads	Muffins, Loaf Bread, Coffeecake, Biscuits, Yeast Bread, Machine
Class 23	Cake Mix Plus	Recipe must include more ingredients than limited on the cake mix box
Class 24	Cake	Sponge Cakes, Fruit Cakes, Pound Cakes, Cupcakes (1 dozen)
Class 25	Pies	Single Crust, Double Crust
Class 26	Cookies	Bar, Pressed, Dropped, Rolled (1 Dozen)
Class 27	Candy & Misc	Fudge, Caramels, Brittle, Popcorn Balls
Class 28	Desserts	Cobblers, Tarts, Scones, Turnovers
Class 29	Novelty Culinary Items	Decorated Cakes (judged for looks and not for taste). Base size limited to 1/4 sheet size, 12" round and one foot height limit. No pre-formed edible decorations.
Class 30	Creative Art with Food	Ant's on a log, Butterfly Sandwiches, Fuzzy Chick Cupcakes



AWARDS

Blue Ribbon	1st	\$10.00
Red Ribbon	2nd	\$7.00
White Ribbon	3rd	\$5.00

Green Ribbon- Participation Only for entries that do not meet exhibition quality standards.

Open Youth 7rs-Under- Participation Only (all Open Youth will receive one premium of \$5.00 regardless of entry quantity).

Purple Ribbon-\$25.00
All Blue Ribbon winners qualify to compete for purple ribbons.

Gold Ribbons-\$50.00

Best of Show -All Purple Ribbon winners will qualify to compete for Gold Ribbons.

1. Entries will receive a ribbon based on placement.
2. One Purple Ribbon will be awarded in all Classes 1-66 and defined by age groups.
3. One Gold Ribbon (Best of Show) will be awarded in each Department and defined by age groups.

Department 4-Arts and Crafts

Class 31	Clay or Dough	Ceramics (stained or glazed), Bread Dough Art, Plaster Craft Must be a minimum of 5"
Class 32	Play Dough Sculpture Dough	Hand made from play dough or sculpture dough
Class 33	Paintings	Decorative and Tole Painting, Stenciling, Canvas
Class 34	Decorated Clothing	Painted, Liquid Embroiders, Embellished
Class 35	Textile Art	Handmade Dolls, Stuffed Animals, Macrame, Weaving, (looms) Misc. Needlework, Needlework on Plastic, Fabric Batiks
Class 36	Paper Art	Paper Art, Paper Mache, Quelling, Decoupage
Class 37	Special Materials	Nature Designs, Metal Craft, Basket Art
Class 38	Small Woodcraft	Handmade Wooden Crafts-No Pre-Made/Cut Kits Doll Houses
Class 39	Large Woodcraft	Handmade Wooden Crafts-No Pre-Made/Cut Kits Furniture, Tables
Class 40	Holiday Decorations	Any items can be used that depict a Holiday
Class 41	Bead Work	Jewelry, Picture Frames, Beaded Clothing, Etc.. Maximum (five (5) entries per person)
Class 42	Fleece Projects	Blankets, Pillows, Handbags, Etc.
Class 43	Decorated Hand-Bags/Totes	Cloth, Denim, Vinyl, Canvas, Leather, Etc.
Class 44	Decorated Flip-Flops/Shoes	Decorated with Artwork/Embellishments



Please remember all paintings or drawings must come ready to hang in a frame.

Arts & Crafts Cont'd



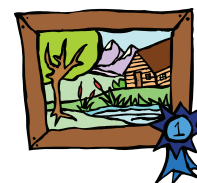
Class 45	Art	Oil, Acrylic, or Water Color Drawing, size of Picture 36x36 or smaller. Must be in picture frame and suitable for hanging.
Class 46	Hobby Collection	Dolls, Thimbles, Spoons, Stick Pins, Salt & Pepper Shakers, Etc. Participant can bring own display, however no display can be larger than 36x36
Class 47	Recycling	Any item made must be constructed of previously used material (egg cartons, milk cartons, soda cans, etc.). Item must be USEABLE.
Class 48	Creative Structures	Lincoln Logs, Legos, Tinker Toys, K-Nex, Etc. Participant can bring own display, however, no display can be larger than 36x36. All pieces must be glued
Class 49	Puppets	Sack Puppets, Paper Bag, Glove, Paper Mache, Etc.—embellishments should enhance each entry and not be limited to magic marker drawing.
Class 50	Scrapbooking Individual Pages	
Class 51	Scrapbooking Whole Books	
Class 52	Miscellaneous	Stained Glass, Glass Work, Etc.
Class 53	Professional	A person who received or has received monies for teaching and/or selling articles.



Department 5-Photography (limited to 3 entries in each class)

Class 54	Standard	All photography must be ready for hanging in an Photography appropriate frame with hanger. Amateur work only. Professionals use Class 53.
Class 55	Digital	All photography must be ready for hanging in an appropriate frame with hanger. Amateur work only. Professionals use Class 53.
Class 56	Black and White	All photography must be ready for hanging in an Photography appropriate frame with hanger. Amateur work only. Professionals use Class 53.
Class 57	Cell Phone	All photography must be ready for hanging in an Photography appropriate frame with hanger. Amateur work only. Entrant must be able to load and print own photograph at entry.
Class 58	Home Movie	Movie can be done by group or individual but, must follow the 2013 Fair Theme Movies will be property of the Fair, available for reproduction and viewed by the public.

****Please identify the type of camera used (digital,35mm, etc.) on the back of your photograph.****



Department 6-Fair Theme

Class 59	Fair Theme	All entries that are related to the 2014 Fair Theme “The Collier County Fair a Salute to Heroes in 2014”, will be judged in this category. Participants must include how or what makes this a Salute to Heroes at the Fair. Possible heroes: military, doctors, nurses, super heroes, teachers Etc..
----------	------------	---



751 39th Ave NE
Naples, FL 34120

Phone: 239-455-1444

Fax: 239-455-6701

E-mail: office@colliercountyfair.com



HORTICULTURE

All plants, including fruit and vegetable products must be of exhibition quality. Management reserves the right to reject any plant that is substandard, either in quality or maturity. Plants must be cleaned, trimmed, free from insects and/or disease and exhibited in proper containers. Absolutely no cans, except those made especially for plant containers will be accepted. Only one type plant is permitted per container (except as designated under class). Plants should be labeled with common name and correct botanical name where possible. Water plants well before bringing to the Fairgrounds. Plants will be watered regularly during Fair time. Special watering instructions for individual plants should be given as plants are entered. All entries must include a 3x5 card with entrant's name, plant's name, when plant was obtained and how plant was grown. Plants and products must have been grown only by the entrant and owned by the entrant before **JANUARY 1, 2014**. Entries will be brought to the Livestock Pavilion.

Department 7 Horticulture



- Class 60 Flowering Potted Plants African Violets, Orchids, Begonias, Bromeliads, Petunias, Dianthus, Marigolds, Snapdragons, Alyssum, Spathophylum, Kalenchoe, Impatient, Anthurums and any other species not listed.
- Class 61 Foliage Potted Plants Philodendrons, Cacti, Succulents, Ferns, Palms, Fancy Leafed Begonia, Spider, Dusty Miller and any other species not listed.
- Class 62 Dish Gardens/Terrarium All entries must have an arrangement or collection of three (3) or more separate plant species grouped in one container. Dish gardens may include either tropical foliage plants or desert cacti and succulent plants in an open container (saucer, bowl, dish, pot, etc...) TERRARIUMS may include foliage plants or other plant species in a closed clear glass container (water bottle, canister, aquarium, etc...). Terrariums must be closed with coverings of glass, plastic, cork other suitable materials.
- Class 63 Vegetables Any vegetable, herb or other species classified as a vegetable. Entries must consist of the vegetable plant and in the case of fruiting vegetables must also have fruit attached either in a mature or immature state of development. One special award will be given for largest vegetable in this class. Vegetables competing for this must be exhibited on the plant.
- Class 64 Recycling Make your own project out of anything recycled.
Ex: Old hats, shoes, old furniture, pots, pans, etc...
- Class 65 Educational Displays Benefits of Fertilizer: grow two plants one with fertilizer and one without, Hydroponics, Seeds, Poster, or a 4-H Club's exhibit Etc...
- Class 66 Biggest Vegetable Leave it on the plant or bring one from home we would like to see who has the best "green thumb".

