

The
46th
Annual
Collier Fair
MARCH 17-27, 2022



ALL ENTRIES MUST BE COMPLETED ONLINE BEFORE ITEMS CAN BE TURNED IN

COLLIERFAIR.COM

FAMILY LIVING AND HORTICULTURE
PREMIUM INFORMATIONAL NEWSLETTER

Inside this issue:

Volume 11, Issue 1

Rules, Regulations, Departments and Classes

Sewing & Stitchery	3
Food Preservation	3
Amateur Culinary	4
Arts and Crafts	5
Photography, Fair Theme and STEAM	6
Hay Bales and Community Interest Crafts/Projects	7
Horticulture	8

Thank you for participating in Family Living. It is a crucial part of our community, culture and our Fair! We greatly appreciate **QUALITY EXHIBITS** as it is so apparent when people devote time to create beautiful exhibits. We hope you enjoy the 2022 Collier Fair. There is no entry fee for entering an item, but entrants are restricted to part-time and full-time residents of Collier County.

ANY ENTRIES THAT HAVE BEEN ENTERED IN THE PAST CANNOT BE RE-ENTERED. Open Youth Exhibitors- 7yrs under of age will only be allowed three (3) entries in Family Living and five (5) entries in Horticulture. **All Youth Exhibitors 7rs-under receive a maximum \$5.00 premium award, regardless of entry quantity.**

Every precaution will be taken to protect exhibits: however, the Collier Fair, its officers or agents, will not be responsible for any accident, loss or damage for any items. Bring completed items to the Fairgrounds on the scheduled entry date(s). All items must be picked up from the Fairgrounds on **SUNDAY, March 27, 2022 from 8:00pm-10:00pm ONLY**. If entries are not picked up by **March 27th**, ALL PREMIUMS WILL BE FORFEITED. No exhibit will be released before that time. The Collier Fair Board will not be responsible for items not picked up by the designated time. **The Take-In Committee has the right to refuse any items found not to be suitable for judging.** All Judges' decisions are final. Entries that represent the Fair Theme should be entered under the 2022 Fair Theme Category. Participant(s) must include explanation as to how entry fits this category.



FAMILY LIVING

All articles to be entered must have been completed between **March 1, 2020 through March 1, 2022** and must be the handiwork of the entrants. Articles stained, soiled or excessively worn will be rejected. **MANDATORY all pictures and photographs must be in a frame and ready to hang with the manufacturer's hanging device attached to the frame (homemade devices will not be accepted). Items not meeting this criteria will be rejected.**

FOOD PRESERVATION



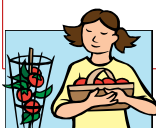
Food preservation items must be done in duplicate-one for tasting and one for display. All entries must include the recipe and processing method on a card attached to the product. All jars must be clear glass (standard) canning jars, 1/2 pint, pint or quart. Jar must be clean. Rings and lids should be free of rust. **NO OTHER JARS WILL BE ACCEPTED.** All entries must be processed by the water bath or pressure canning method. Products that do not meet the processing requirements will automatically be disqualified. Paraffin is not accepted.

CULINARY

Culinary entries must have attached recipe card and be carefully displayed under clear plastic disposable containers. Culinary entries are to be turned in **Sunday, February 13, 2022 at 4:00pm** to the Fair Office. The Collier Fair is not responsible for pans, platters, plates or etc. Recipe cards will not be returned and may be published or shared with anyone.

HORTICULTURE

All plants, including fruit and vegetable products must be of exhibition quality. Management reserves the right to reject any plant that is substandard, either in quality or maturity. Plants must be cleaned, trimmed, free from insects and/or disease and exhibited in proper containers. Absolutely no cans, except those made especially for plant containers will be accepted. Only one type plant is permitted per container (except as designated under class). Plants should be labeled with common name and correct botanical name where possible. Water plants well before bringing to the Fairgrounds. Plants will be watered regularly during Fair time. Special watering instructions for individual plants should be given as plants are entered. All entries must include a 3x5 card with entrant's name, plant's name, when plant was obtained and how plant was grown. Plants and products must have been grown only by the entrant and owned by the entrant before **JANUARY 1, 2022**. Entries will be brought to the Livestock Pavilion.



Department 1-Sewing and Stitchery

Class 1	Women's Apparel	Dresses, coats, lingerie, suits, beachwear, etc.
Class 2	Men's Wear	Pants, jackets, beachwear, suits, shirts, etc.
Class 3	Children's Wear	Baby garments, children's clothing, etc.
Class 4	Home Accessories	Placemats, pillows, bed accessories, etc.
Class 5	Embroidery	Placemats, pillows, picture, tablecloth, etc.
Class 6	Counted Cross Stitch	Samples, wall hanging, picture, pillow, etc.
Class 7	Needlepoint	Canvas, chair covers, purse, wall hanging, hooking, pillow, rug, etc.
Class 8	Latch or Locker Hooking	Rug, needle punch, wall hanging, etc.
Class 9	Crochet	Tablecloths, afghan, baby set, cape, etc.
Class 10	Knitting	Dress, afghan, sweater, children's wear, etc.
Class 11	Machine Quilting	Lap size or larger, etc.
Class 12	Hand Quilting	Lap size or larger, etc.
Class 13	Quilting	Crib, wall hanging, mini-quilt, pillows, etc.
Class 14	Quilted Wearable	Vest, jacket, clothing articles, etc.
Class 15	Professional/Creative	Any article or apparel designed and made by exhibitor. Sewing & Stitchery PROFESSIONAL- A person who received or has received monies for teaching and or selling their work.



Special points of interest:

- ALL ENTRY FORMS FOR FAMILY LIVING DEPARTMENTS WILL BE PROVIDED AT THE FAMILY LIVING TENT.
- ALL ENTRY FORMS FOR HORTICULTURE WILL BE PROVIDED AT THE LIVESTOCK PAVILION.
- ALL ENTRIES (except Amateur Culinary see below) WILL BE RECEIVED ON FRIDAY, FEBRUARY 25, 2022 FROM 6:00PM-8:00PM AND SATURDAY, FEBRUARY 26, 2022 FROM 10:00AM-1:00PM.
- AMATEUR CULINARY ENTRIES WILL BE RECEIVED ON FEBRUARY 13, 2022 AT 4:00PM ONLY, IN THE FAIR OFFICE.
- IT IS SUGGESTED BY THE FAMILY LIVING COMMITTEE THAT EACH ENTRANT HAVE A LIST OF ENTRIES PREPARED TO SPEED UP THE ENTRY PROCESS. THIS IS ESPECIALLY HELPFUL FOR ENTRANTS HAVING MULTIPLE ENTRIES. THE LIST SHOULD INCLUDE THE NAME OF EACH ITEM, WITH CORRECT DEPARTMENT AND CLASS NUMBERS.

Department 2-Food Preservation

Class 16	Vegetables (Plain or Pickled)
Class 17	Fruits
Class 18	Preserves, Jams, Marmalades, Jellies
Class 19	Salsa, Sauces
Class 20	Butters
Class 21	Pickles, Relishes
Class 22	Meats
Class 23	Dairy

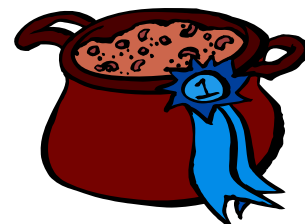


Remember to include your recipe and instruction 3x5 index card with both Jars!



Department 3-Amateur Culinary

Class 24	Yeast Breads	White Bread, Whole Wheat, Brown Bread, Nut Bread, Cinnamon Rolls, Pecan Rolls, Wheat or Dinner Rolls, Vegetable Bread Coffeecake (NO FRUIT)
Class 25	Quick Bread/Donuts	Quick Coffee Cake, Baking Powder Biscuits, Cheese Biscuits, Muffins, Fruit Bread, Nut Bread, Vegetable Bread, Banana Bread, Homemade Donuts, Scones
Class 26	Machine Bread	White, Whole Wheat, Herb, Fruit.
Class 27	Cookies	Bar, Pressed, Dropped, Rolled, Brownies, Meringues, Decorated, (1 Dozen)
Class 28	Candy & Misc.	Fudge, Caramels, Brittle, Popcorn Balls, Hard, Toffee, Taffy, No Bakes
Class 29	Pies	Apple, Peach, Strawberry, ETC... Single Crust or Double Crust, (Refrigerated pies also accepted)
Class 30	Cobblers	All kinds
Class 31	Loaf or Pan Cakes	Angel Food, Applesauce, Fruit Cake, Chiffon, Jelly Roll, Marble, Molasses, Nut, Spice, Sponge, Upside Down Cake, Pound Cake
Class 32	Layer Cakes	German Chocolate, Devil's Food, White, Caramel, Yellow, Coconut, Butter, Nut, Banana, Cherry ETC...
Class 33	Decorated Cakes	Decorated Cakes and Cup Cakes (Birthday, Wedding, Special Occasion Cakes) Must be edible.
Class 34	Cake Mix Plus	Recipe must include more ingredients than limited on the cake mix box
Class 35	Creative Art with Food	Butterfly Sandwiches, Ant on a Log, Decorated Molds (Does not need to be edible).
Class 36	Healthy Desserts	Diabetic, KETO, Paleo, Sugar Free, Gluten Free
Class 37	Grandma's Favorite Recipe	Bring in a cake that Grandma always made or cake that the recipe has been passed down from generation to generation or is your favorite thing she made
Class 38	Misc.	



Department 4-Arts and Crafts (3 Entries Per Class)

Class 39	Clay or Dough	Ceramics (stained or glazed), Bread Dough Art, Plaster Craft Hand made from play dough or sculpture dough . Must be a minimum of 5".
Class 40	Paintings	Decorative and Tole Painting, Stenciling, Canvas
Class 41	Textile Art	Handmade Dolls, Stuffed Animals, Macramé, Weaving, (looms) Misc. Needlework, Needlework on Plastic, Fabric Batiks
Class 42	Paper Art	Paper Art, Paper Mache, Quelling, Decoupage
Class 43	Special Materials	Nature Designs, Metal Craft, Basket Art
Class 44	Small Woodcraft	Handmade Wooden Crafts-No Pre-Made/Cut Kits Doll Houses
Class 45	Large Woodcraft	Handmade Wooden Crafts-No Pre-Made/Cut Kits Furniture, Tables
Class 46	Holiday	Any items can be used that depict a Holiday Decorations
Class 47	Jewelry	Jewelry, Picture Frames, Beaded Jewelry, Wire Jewelry Etc.. Maximum (three (3) entries per person)
Class 48	Fleece Projects	Blankets, Pillows, Handbags, Etc.
Class 49	Decorated Handbags/Totes	Cloth, Denim, Vinyl, Canvas, Leather, Etc.
Class 50	Adult Coloring Pages	Adult Coloring Book (3 Print Limit)
Class 51	Painting	Oil, Acrylic, or Water Color Drawing, size of Picture 36x36 or smaller. Must be in picture frame and suitable for hanging.
Class 52	Hobby	Dolls, Thimbles, Spoons, Stick Pins, Salt & Pepper Shakers, Etc. Participant can bring own Collection display, however no display can be larger than 36x36
Class 53	Scrapbooking	Individual Pages and Whole Books
Class 54	Pencil Art	Pencil Drawings, Size of Picture 36x36 or smaller. Must be in a picture frame
Class 55	Diamond Painting	Diamond painting uses diamond shaped pieces to create a beautiful sparkling picture effect
Class 56	Tie Dye	Any type of tie dye craft projects
Class 57	Miscellaneous	Stained Glass, Glass Work, Etc.



Please remember all paintings or drawings

Department 5-Photography (limited to 3 entries in each class)

Class 58	Digital	All photography must be ready for hanging in an appropriate frame with hanger. Amateur work only.
Class 59	Black and White	All photography must be ready for hanging in an Photography appropriate frame with hanger. Amateur work only.
Class 60	Cell Phone	All photography must be ready for hanging in an Photography appropriate frame with hanger. Amateur work only. Entrant must be able to load and print own photograph at entry.

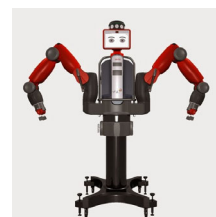
****Please identify the type of camera used on the back of your photograph.****

Department 6-Fair Theme

Class 61	Fair Theme	All entries that are related to the 2022 Fair Theme "JAM PACKED FUN FOR EVERYONE at the Collier Fair" . Participants must include the theme in their entry .
----------	------------	---

Department 7-STEAM

Class 62	Creative Structures	Lincoln Logs, Legos, Tinker Toys, K-Nex, Etc. Participant can bring own display, how ever, no display can be larger than 36x36. All pieces must be glued
Class 63	Recycling	Any item made must be constructed of previously used material (egg cartons, milk cartons, soda cans, etc.). Item must be USEABLE.
Class 64	Barn Wood	Any projects using recycled wood from barns, pallets, fence, homes etc...
Class 65	Robotics	Any item that is motorized and used as a robotic device



Collier Fair March 17-27, 2022
JAM PACKED FUN FOR EVERYONE!

AWARDS

Blue Ribbon 1st \$10.00

Red Ribbon 2nd \$7.00

White Ribbon 3rd \$5.00

Green Ribbon -Participation
Only for entries that do not meet exhibition quality standards.

Open Youth 7rs-Under-Participation Only (all Open Youth will receive one premium of \$5.00 regardless of entry quantity).

Purple Ribbon-\$25.00. All Blue Ribbon winners qualify to compete for purple ribbons.

Gold Ribbons-\$50.00

Best of Show -All Purple Ribbon winners will qualify to compete for Gold Ribbons.

1. Entries will receive a ribbon based on placement.
2. One Purple Ribbon will be awarded in all Classes 1-73 and defined by age groups.
3. One Gold Ribbon (Best of Show) will be awarded in each Department and defined by age groups.

Department 8-Hay Bale Decorating

Class 66	Small	Craft Store Size Hay Bales Decorated
Class 67	Medium	Rectangle Hay Bales Used for Feed (able to be carried)
Class 68	Large	Round Hay Bale Used for Multiple Animal Feed



Department 9-Community Interest Crafts/Projects

Class 69	Sunday School Projects
Class 70	Daycare Projects
Class 71	Boy Scout Projects
Class 72	Girl Scout Projects
Class 73	Public School Projects
Class 74	Private School Projects
Class 75	Home School Projects
Class 76	Club or other Organization Projects



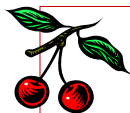
Be sure and check out the new classes in some of our other departments. If you would like to see a new class in 2023, please email us at info@colliercountyfair.com

WE'RE ON THE WEB

COLLIERFAIR.COM

TWITTER AND
FACEBOOK





Horticulture

All plants, including fruit and vegetable products must be of exhibition quality. Management reserves the right to reject any plant that is substandard, either in quality or maturity. Plants must be cleaned, trimmed, free from insects and/or disease and exhibited in proper containers. Absolutely no cans, except those made especially for plant containers will be accepted. Only one type plant is permitted per container (except as designated under class). Plants should be labeled with common name and correct botanical name where possible. Water plants well before bringing to the Fairgrounds. Plants will be watered regularly during Fair time. Special watering instructions for individual plants should be given as plants are entered. All entries must include a 3x5 card with entrant's name, plant's name, when plant was obtained and how plant was grown. Plants and products must have been grown only by the entrant and owned by the entrant before **JANUARY 1, 2022**. Entries will be brought to the Livestock Pavilion.

Department-10 Horticulture



- | | | |
|----------|-------------------------|---|
| Class 80 | Flowering Potted Plants | African Violets, Orchids, Begonias, Bromeliads, Petunias, Dianthus, Marigolds, Snapdragons, Alyssum, Spathophyllum, Kalanchoe, Impatient, Anthuriums and any other species not listed. |
| Class 81 | Foliage Potted Plants | Philodendrons, Cacti, Succulents, Ferns, Palms, Fancy Leafed Begonia, Spider, Dusty Miller and any other species not listed. |
| Class 82 | Dish Gardens/Terrarium | All entries must have an arrangement or collection of three (3) or more separate plant species grouped in one container. Dish gardens may include either tropical foliage plants or desert cacti and succulent plants in an open container (saucer, bowl, dish, pot, etc....)
TERRARIUMS may include foliage plants or other plant species in a closed clear glass container (water bottle, canister, aquarium, etc....). Terrariums must be closed with coverings of glass, plastic, cork other suitable materials. |
| Class 83 | Vegetables | Any vegetable, herb or other species classified as a vegetable. Entries must consist of the vegetable plant and in the case of fruiting vegetables must also have fruit attached either in a mature or immature state of development. One special award will be given for largest vegetable in this class. Vegetables competing for this must be exhibited on the plant. |
| Class 84 | Recycling | Make your own project out of anything recycled. Ex: Old hats, shoes, old furniture, pots, pans, etc.... |
| Class 85 | Educational Displays | Benefits of Fertilizer: grow two plants one with fertilizer and one without, Hydroponics, Seeds, Poster, or a Club's exhibit Etc.... |
| Class 86 | Biggest Vegetable | Leave it on the plant or bring one from home we would like to see who has the best "green thumb". |
| Class 87 | Propagating Plants | Propagating from cuttings displayed in glass jars, vases, or containers |
| Class 88 | Mis. | |

